

RECEIVED
LARAMIE COUNTY
CHEYENNE, WY.

SE CORNER Sec. 22 T 18N R 68W

CERTIFIED LAND CORNER RECORDATION

OCT 5 PM 3 00

DESCRIPTION OF CORNER EVIDENCE FOUND, AND ORIGINAL RECORD (IF known)

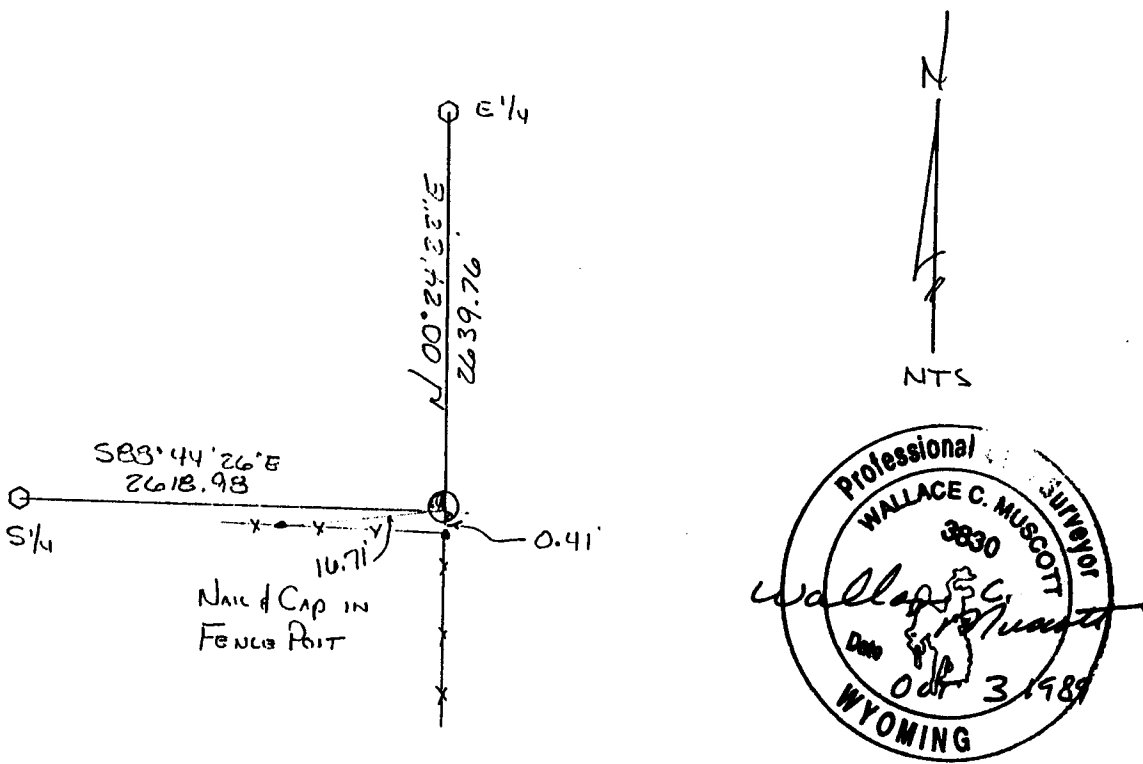
THIS IS AN UPDATE TO THE CORNER RECORDATION I PREVIOUSLY FILED ON THIS CORNER. ALSO AN UPDATE TO A CORNER RECORDATION BY A.L. SCOTT LS 2573 (FEB 1980) (FOUND 1/2" REBAR) WE ALSO FOUND THE ORIGINAL GLO STONE (16X14X6 GRANITE) LAYING LOOSE IN THE BOTTOM OF A WASH APPROX 42' AWAY FROM THE 1/2" REBAR. I ACQUIRED THE 1/2" REBAR.

DESCRIPTION OF MONUMENT AND ACCESSORIES ESTABLISHED TO PERPETUATE THE ORIGINAL LOCATION OF THIS CORNER:

REPLACED THE 1/2" REBAR WITH A 30" X 5/8" REBAR WITH A CORPS OF ENGINEERS BRASS CAP, SET FLUSH, SET THE ORIGINAL STONE ALONG SIDE, AND RAISED A MOUND OF STONE.

MAY 16 1989

SKETCH, WITH COURSE AND DISTANCE TO ADJACENT CORNER IF DETERMINED IN THIS SURVEY. (May Sketch or Paste Reproduction on Reverse Side.)



I, Wallace C. Muscott certify that I have carefully performed or reviewed the work done on the diagrammed corner as reported on this recordation form and approve the same.

Wallace C. Muscott 3830
Signature of Surveyor Registration No.

STATE OF WYOMING,
Office of Clerk and Recorder,
County of _____

This "corner record" was filed for record on the _____ day of _____, 19____, was noted on the cross-index plat and is assigned page No. _____, in book No. _____.

County Official			
Cross Index No. <u>R-17</u>	T. <u>18N</u>	R. <u>68W</u>	Mer. <u>6th</u>
_____	T. _____	R. _____	Mer. _____
_____	T. _____	R. _____	Mer. _____
_____	T. _____	R. _____	Mer. _____
_____	T. _____	R. _____	Mer. _____
_____	T. _____	R. _____	Mer. _____
_____	T. _____	R. _____	Mer. _____